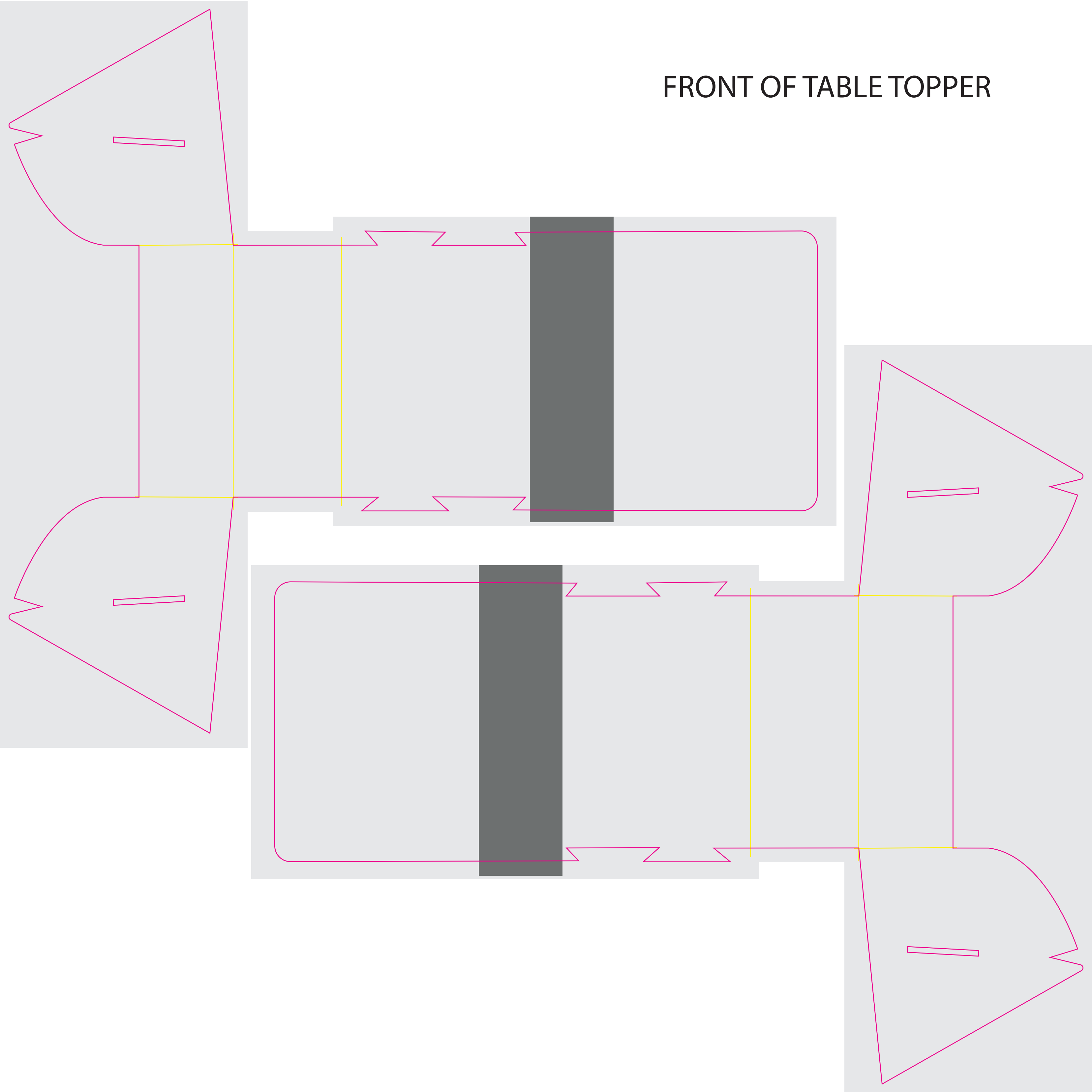
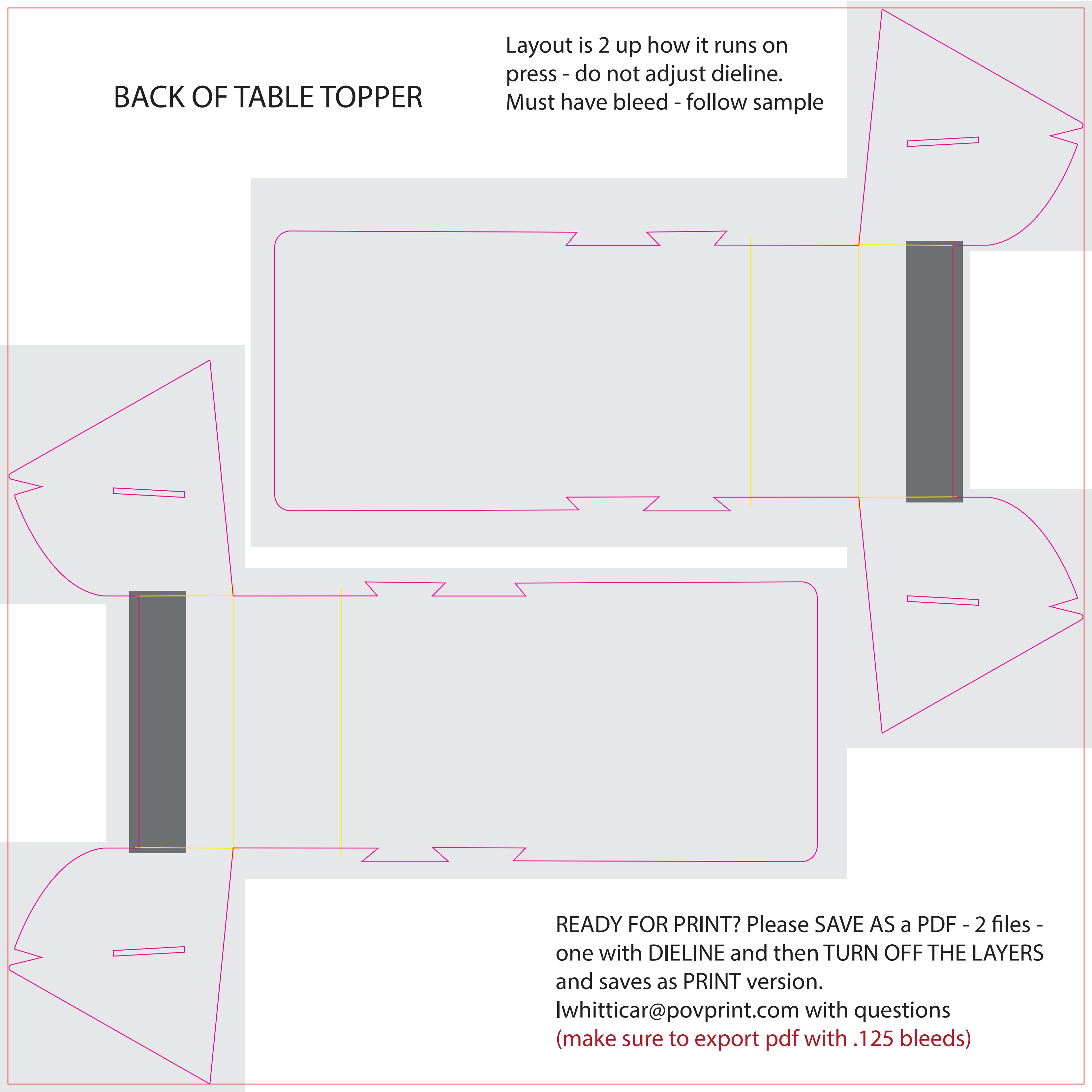


# FRONT OF TABLE TOPPER



# BACK OF TABLE TOPPER

Layout is 2 up how it runs on press - do not adjust dieline.  
Must have bleed - follow sample



READY FOR PRINT? Please SAVE AS a PDF - 2 files - one with DIELINE and then TURN OFF THE LAYERS and saves as PRINT version.  
lwhitticar@povprint.com with questions  
(make sure to export pdf with .125 bleeds)